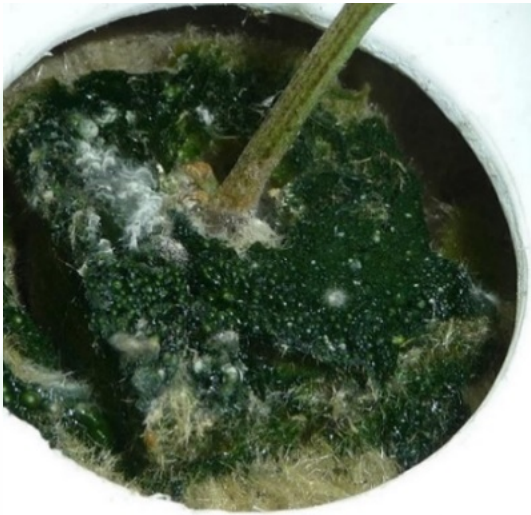




Information Sheet: Common Cannabis Plant Diseases

Algae



Look for:

- Slimy green, reddish-brown, or black film on media, grow equipment, or water reservoir
- Emits bad odor

Treatments:

- Switch to black containers
- Cover media beds with panda paper (white side up) or perlite
- Cover blocks and plugs with plastic, leaving small hole for plant stalk
- Apply diluted hydrogen peroxide, colloidal silver, or grapefruit seed (5-10 drops/gallon of water)

Botrytis (Bud Rot)



WARNING: Moldy buds are unhealthy to consume!

Look for:

- White powder-like growth (early sign)
- Growth becomes smoky gray or brown and fuzzy
- Interior of colas become wet and squishy

Treatment:

- Remove infected buds using disposable gloves and disinfect pruning scissors afterwards
- Improve air flow by increasing fans or plant spacing
- Reduce humidity



Information Sheet: Common Cannabis Plant Diseases

Fusarium Root Rot



Look for:

- Curled leaf tips, dark spots on lower leaves, and wilted, dry leaves (early signs)
- Stems turn yellow and eventually become brown

Treatment:

- No cure for individual plants
- Remove affected plants from garden
- Wash all tools with hydrogen peroxide or bleach
- Start next crop in new soil (indoor) or garden plot (outdoor)

Powdery Mildew



WARNING: Moldy buds are unhealthy to consume!

Look for:

- Raised surfaces on tops of leaves (early sign)
- Leaves appear to be dusted with flour or sugar
- Leaves turn yellow or brown and die

Treatment:

- Discard any plants with symptoms
- Introduce *Bacillus subtilis* biological control



Information Sheet: Common Cannabis Plant Diseases

Pythium Root Rot



Look for:

- Wilted in the middle of day but may recover at night
- Brown, circular spots on plant
- Plant becomes yellow in color with brown leaf edges
- Root tips become brown and dead
- Foul odor similar to mildew (in hydroponics)

Treatment:

- No treatment for crop
- Discard all plants and thoroughly clean environment

Stem Rot (Damping Off)



Look for:

- Yellowish-brown discoloration of lower portion of stalk
- Stem gets brown lesions and becomes mushy, damp, and soft
- Plant falls over and dies

Treatment:

- Difficult to treat in seedlings
- For adults, use clove oil, coriander oil, food-safe sanitizers, sesame oil, or beneficial fungi
- Use copper sulfate supplement or bury pennies in the dirt



Information Sheet: Common Cannabis Plant Diseases

Verticillium Wilt



Look for:

- Lower leaves/nodes turn yellow at margins and between veins (early sign)
- Leaves turn gray-brown, curl, wilt, and die
- Symptoms may appear on only one part of plant

Treatment:

- *Bacillus subtilis* (FZB24 strain) and *Trichoderma* fungus
- Remove all infected plants and media from garden
- Start again with new media (indoor) or added compost (outdoor)
- Sterilize soil