



# Information Sheet: Common Cannabis Plant Pests

## Aphids



Look for:

- Bugs on underside of leaves
- Wilted leaves
- Decline in plant vigor, with delayed flowering
- Curled, light-colored leaves (advanced infestation)

Fight with:

- Ladybugs, lacewings, and parasitic wasps

## Caterpillars



Look for:

- Holes in stems surrounded by brown trails
- Small groups of yellow or white dots on leaves near the top of the plant (eggs)

Fight with:

- Remove all infested parts of plant
- Remove and destroy any caterpillars on plants
- Parasitic wasps and praying mantises
- Bacillus thuringiensis (Bt)

## Fungus Gnats



Look for:

- Maggot-like larvae on potato (when buried in soil)
- Flying insects close to the soil

Fight with:

- Reduce excess moisture in soil and cover with perlite cap
- Bacillus thuringiensis var Israelensis in irrigation or reservoir water
- Steinernema nematodes, Hypoaspis predatory mites, and predatory hunter flies

## Mealybugs



Look for:

- White bumps attached to the stem of your plant at the nodes
- Shiny, sticky film on the leaves
- Dark, fuzzy, black spots on the leaves

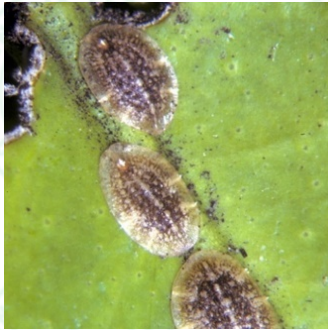
Fight with:

- Remove from plant with cotton soaked in isopropyl alcohol or neem oil
- Cryptolaemus montrouzieri and Leptomastix dactylopii



# Information Sheet: Common Cannabis Plant Pests

## Scale



Look for:

- Brown bumps attached to stems and under leaves
- Reflective, shiny, wet-looking film on leaves and increase in ant activity

Fight with:

- Remove from plant with cotton soaked in isopropyl alcohol or neem oil
- Move infected plant to another room until infestation is gone
- Remove and discard heavily infested parts of the plant
- Parasitic wasps, lacewings, and ladybugs

## Spider Mites



Look for:

- Webs
- Mites on underside of leaves
- Tiny brown holes with yellow rings and yellowish discoloration

Fight with:

- Higher humidity and lower temperatures
- BotaniGard ES (*Beauveria bassiana*)
- Ladybugs, wasps, lacewings, and predatory mites

## Thrips



Look for:

- Insects hiding parallel to leaf veins in middle and lower areas of plant
- A shiny, silvery sheen on leaf surfaces

Fight with:

- *Amblyseius cucumeris* and parasitic wasps to kill adults
- Irrigate with a neem oil to kill larvae (only during vegetative stage)

## Whiteflies



Look for:

- Flying insects on the underside of cannabis leaves that hover if you shake the plant

Fight with:

- Lower the temperature below 80°F (26.7°C)
- Predatory mites and parasitic wasps